



Abrazo Medical Group primary care and specialty physicians provide the highest quality of care for the entire family. Abrazo Medical Group offers convenient locations and office hours to meet patient needs. Physicians are contracted with most major insurance groups and new patients are always welcomed.

FAMILY MEDICINE

ABRAZO MEDICAL GROUP
6036 N. 19th Ave., Suite 506
Phoenix, AZ 85015 | **602.841.0721**

ABRAZO MEDICAL GROUP ANTHEM
41810 N. Venture Dr., Building C-120
Anthem, AZ 85086 | **623.551.2516**

ABRAZO MEDICAL GROUP ARROWHEAD
Arrowhead Medical Plaza II
18700 N. 64th Dr., Suite 205
Glendale, AZ 85308 | **623.561-0526**

ABRAZO MEDICAL GROUP CAVE CREEK
2340 E. Beardsley Rd., Suite 260
Phoenix, AZ 85024 | **602.482.0756**

ABRAZO MEDICAL GROUP DENARO PLAZA
10180 W. Happy Valley Rd.
Building A, Suite 100
Peoria, AZ 85383 | **623.561.3000**

ABRAZO MEDICAL GROUP GOODYEAR
3030 N. Litchfield Rd., Suite 120
Goodyear, AZ 85395 | **623.882.9161**

ABRAZO MEDICAL GROUP PALM VALLEY
13657 W McDowell Rd, Ste 207
Goodyear, AZ 85338 | **623.935.6919**

MARYVALE SPECIALTY GROUP FAMILY MEDICINE
4524 N. Maryvale Pkwy., Suite 120
Phoenix, AZ 85031 | **623.848.4460**

PARKWAY MEDICAL
6565 E. Greenway Pkwy., Suite 100
Scottsdale, AZ 85254 | **480.348.3200**

PHOENIX BAPTIST HOSPITAL FAMILY MEDICINE CENTER
2000 W. Bethany Home Rd.
Phoenix, AZ 85015 | **602.246.5525**

UNION HILLS FAMILY MEDICINE CENTER
18185 N. 83rd Ave., Building D, Suite 107
Glendale, AZ 85308 | **623.583.0306**

WEST BASELINE FAMILY MEDICINE CENTER
5130 W. Baseline Rd., Suite 103
Laveen, AZ 85339 | **602.237.0039**

WEST OLIVE FAMILY MEDICINE CENTER
5112 W. Olive Ave.
Glendale, AZ 85302 | **623.939.8618**

CARDIOVASCULAR

ARIZONA HEART INSTITUTE MAIN CLINIC
2632 N. 20th St.
Phoenix, AZ 85006 | **602.266.2200**

ARIZONA HEART INSTITUTE PAYSON
708 S. Coeur D'Alene Ln., Suite B
Payson, AZ 85541 | **928.474.2175**

GENERAL SURGERY

ABRAZO GENERAL SURGERY GROUP
4524 N. Maryvale Pkwy., Suite 220
Phoenix, AZ 85031 | **623.848.4470**

CHARLES MATLIN, MD GENERAL & VASCULAR SURGERY
6036 N. 19th Ave., Suite 505
Phoenix, AZ 85015 | **602.249.0839**

URGENT CARE

ABRAZO MEDICAL GROUP URGENT CARE
6565 E. Greenway Pkwy., Suite 100A
Scottsdale, AZ 85254 | **480.905.2700**

Complete family care from pediatrics to geriatrics

Women's wellness care

Mother and Newborn care

Diabetes care

Minor surgical procedures

Adolescent medicine including sports physicals

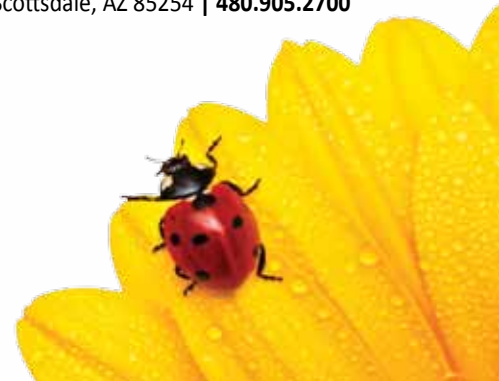
Immunizations and flu vaccinations

On-site laboratory services

Extended hours and Saturday appointments



8620 N. 22nd Avenue, Suite 103
Phoenix, AZ 85021 | 602.674.1447
AbrazoHealth.com



ABRAZO MEDICAL GROUP



MAP NOT TO SCALE

- 1 ABRAZO MEDICAL GROUP**

- 2 ABRAZO MEDICAL GROUP – ANTHEM**

- 3 ABRAZO MEDICAL GROUP – ARROWHEAD**

- 4 ABRAZO MEDICAL GROUP – CAVE CREEK**

- 5 ABRAZO MEDICAL GROUP – DENARO PLAZA**

- 6 ABRAZO MEDICAL GROUP – GOODYEAR**

- 7 ABRAZO MEDICAL GROUP – PALM VALLEY**

- 8 MARYVALE SPECIALTY GROUP – FAMILY MEDICINE**

- 9 PARKWAY MEDICAL**

- 10 PHOENIX BAPTIST HOSPITAL – FAMILY MEDICINE CENTER**

- 11 UNION HILLS FAMILY MEDICINE CENTER**

- 12 WEST BASELINE FAMILY MEDICINE CENTER**

- 13 WEST OLIVE FAMILY MEDICINE CENTER**

- 14 ABRAZO GENERAL SURGERY GROUP**

- 15 CHARLES MATLIN, MD GENERAL & VASCULAR SURGERY**

- 16 ABRAZO MEDICAL GROUP – URGENT CARE**

ABRAZO HEALTH CARE

Arizona Heart Hospital | Arrowhead Hospital
 Maryvale Hospital | Paradise Valley Hospital
 Phoenix Baptist Hospital | West Valley Hospital



8620 N. 22nd Avenue, Suite 103
 Phoenix, AZ 85021 | 602.674.1447
 AbrazoHealth.com

Visit www.abrazohealth.com for detailed map and instructions